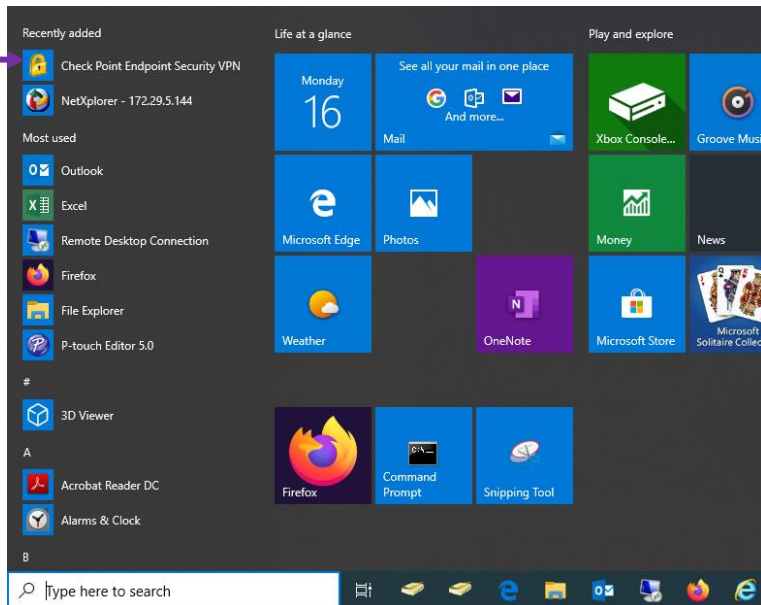


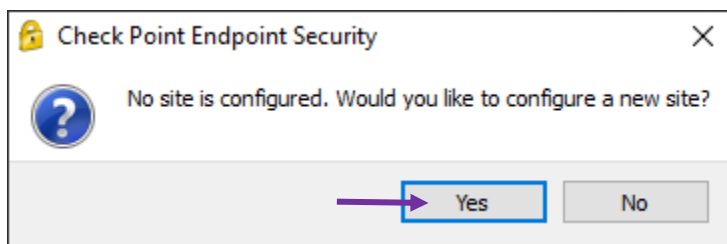
## Checkpoint VPN Profile with Certificate

To Activate VPN Profile with Certificate follow the below steps.

1- Click start then click Check Point Endpoint Security VPN



2- Click Yes to configure new site

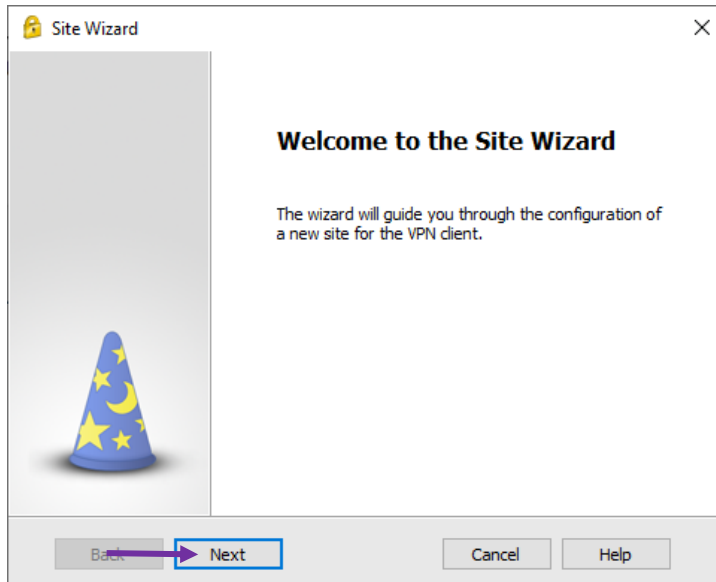


3- Click Next

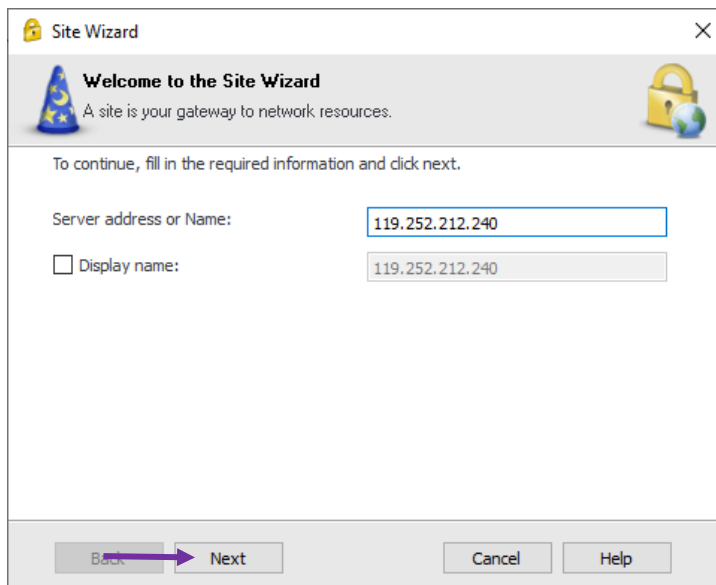


**+91- 1244341244**

## Checkpoint VPN Profile with Certificate



- 4- Enter the IP Address of server (**For Sec-32:- 119.252.208.40**) and click next  
(**For GNOC:- 119.252.212.240**)



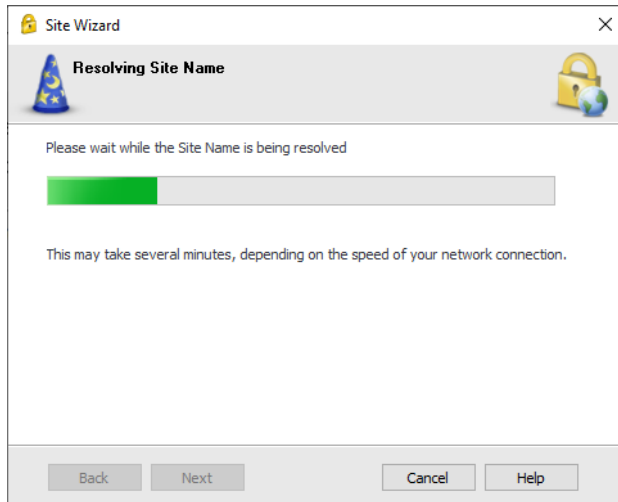
Wait for a couple of minutes to resolving site name



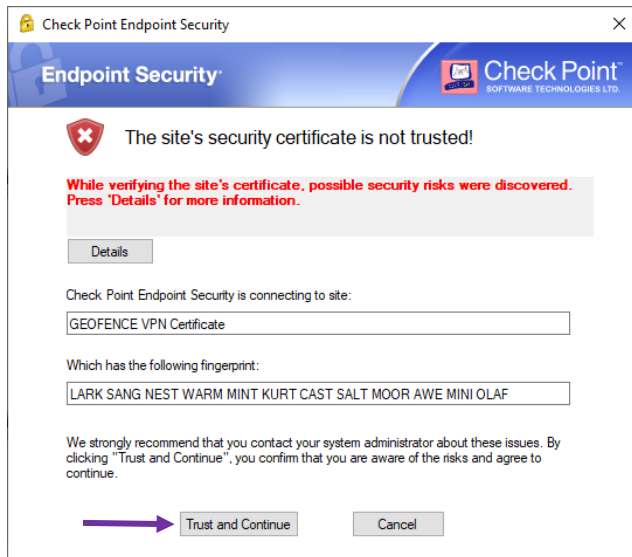
**+91- 1244341244**

In case of any assistance you may get in touch with our 24\*7 support [itsupport24x7@infotelgroup.in](mailto:itsupport24x7@infotelgroup.in)

## Checkpoint VPN Profile with Certificate



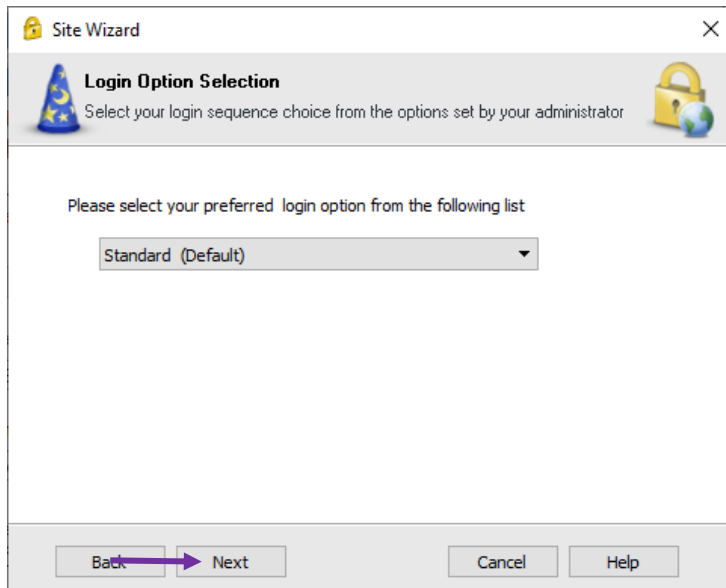
5- Click on trust and continue to verify the certificate



+91- 1244341244

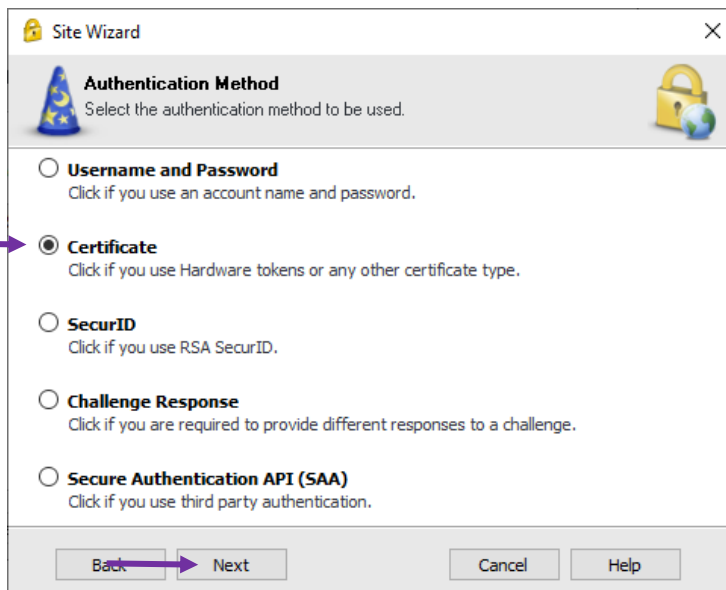
## Checkpoint VPN Profile with Certificate

6- Click Next



The screenshot shows the 'Site Wizard' window with the 'Login Option Selection' step. The title bar reads 'Site Wizard' and 'Login Option Selection'. Below the title, it says 'Select your login sequence choice from the options set by your administrator'. A dropdown menu is set to 'Standard (Default)'. At the bottom, there are buttons for 'Back', 'Next', 'Cancel', and 'Help'. A purple arrow points to the 'Next' button.

7- Select Certificate and click Next



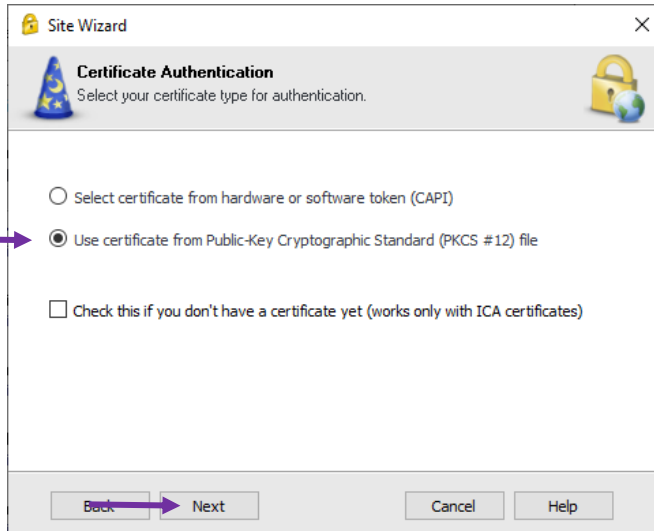
The screenshot shows the 'Site Wizard' window with the 'Authentication Method' step. The title bar reads 'Site Wizard' and 'Authentication Method'. Below the title, it says 'Select the authentication method to be used.'. There are five radio button options: 'Username and Password', 'Certificate', 'SecurID', 'Challenge Response', and 'Secure Authentication API (SAA)'. The 'Certificate' option is selected, indicated by a purple arrow pointing to its radio button. At the bottom, there are buttons for 'Back', 'Next', 'Cancel', and 'Help'. A purple arrow points to the 'Next' button.



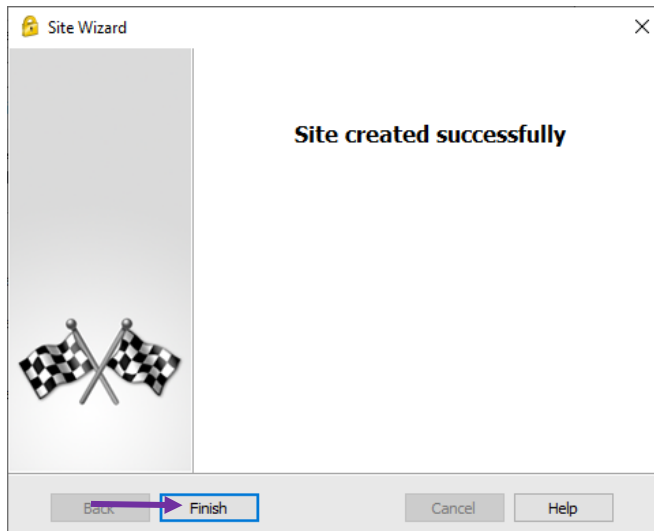
+91- 1244341244

## Checkpoint VPN Profile with Certificate

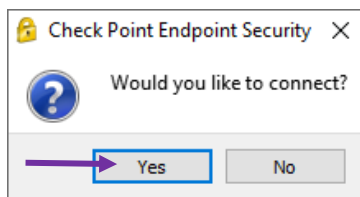
8- Select Use certificate from Public-Key Cryptographic Standard (PKCS #12) file and click next



9- Click Finish



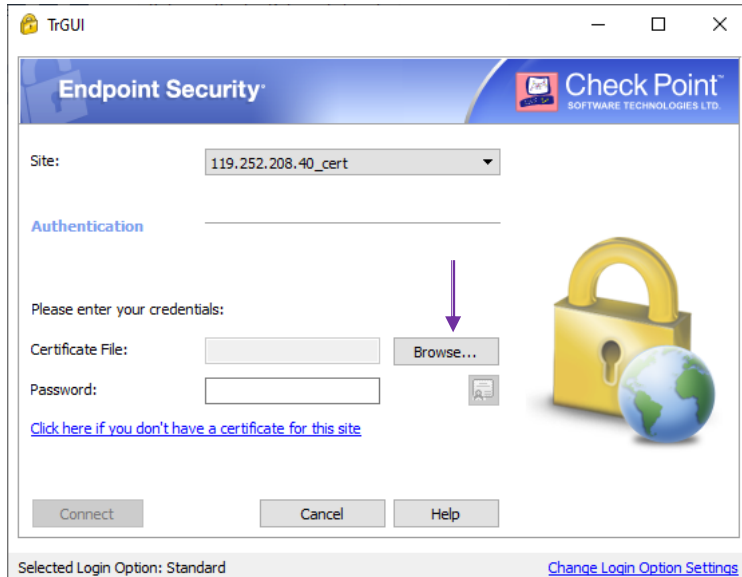
10- pop-up window will appear:- Would you like to connect? Click Yes



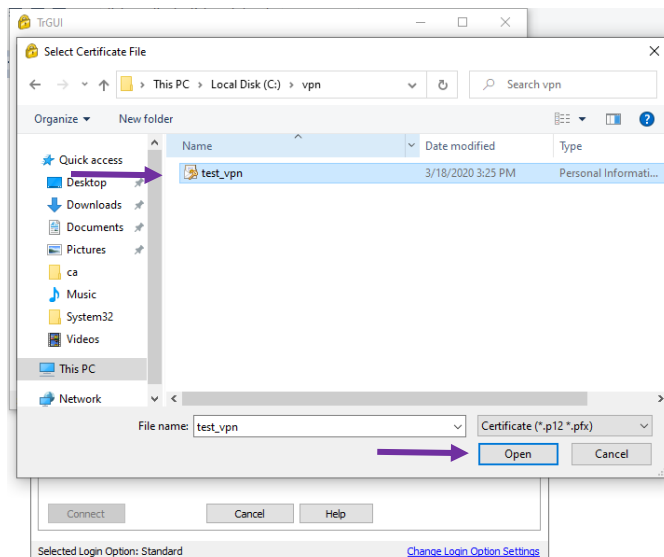
+91- 1244341244

## Checkpoint VPN Profile with Certificate

11- Click Browse... and select the certificate.



12- Select Certificate

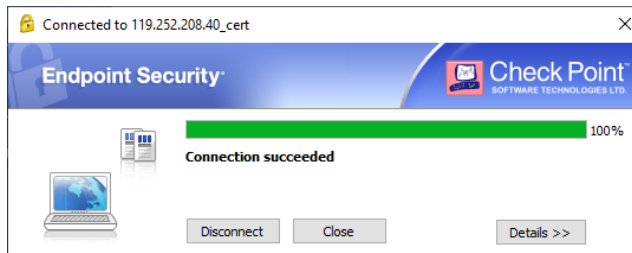
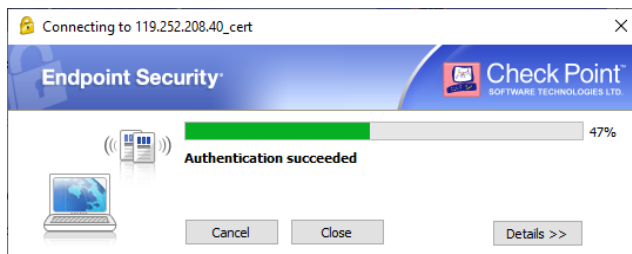
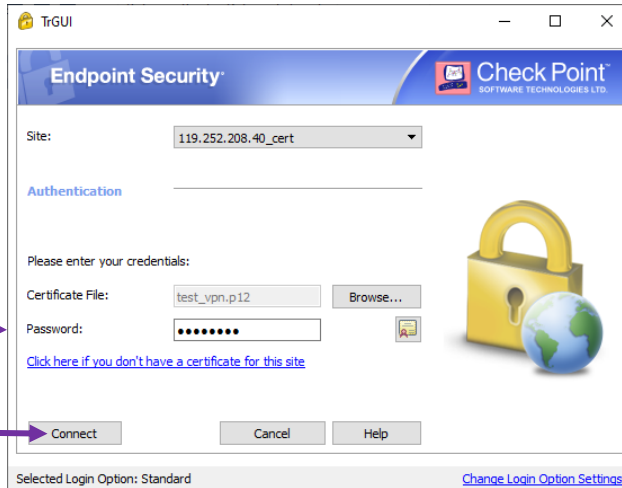


**+91- 1244341244**

In case of any assistance you may get in touch with our 24\*7 support [itsupport24x7@infotelgroup.in](mailto:itsupport24x7@infotelgroup.in)

## Checkpoint VPN Profile with Certificate

13- Enter password and click connect.



Now Connection Succeeded.



+91- 1244341244

In case of any assistance you may get in touch with our 24\*7 support [itsupport24x7@infotelgroup.in](mailto:itsupport24x7@infotelgroup.in)